



CATHERINE M  
AESTHETICS

# Chin Augmentation

The extra stuff you may want to know!

---



## Downtime

---

You may return to your normal activities provided you follow the aftercare instructions. You may feel soreness in the area of injection up to 5 days after. Bruising & Swelling Can Last 1 - 7 days. Give the product 2 weeks to fully integrate into your own tissues.

## Risks & Adverse Effects

---

Risks and adverse effects associated with injectable fillers are minimal in general. The common immediate adverse effects are bruising, redness, swelling, asymmetry, and itching in the injected area which will subside in a few days. Much less commonly there may be eruptions, skin sores, or infection at the injection site. On rare occasions, hard persistent bumps or nodules may form requiring dissolving with Hylenex injections or possible surgical removal. Dermal fillers also have the potential to migrate and spread to an area other than the one they were injected into.

With any dermal filler, if filler is placed into a vein or artery an occlusion can occur slowing or stopping blood flow to the surrounding tissues. It is important to seek out a practitioner that is well trained to recognize this adverse event and also have the equipment and resources to intervene immediately. At Catherine M Aesthetics, I have the medication needed on hand to help reverse an occlusion, while also having access to a Doctor of Emergency Medicine and an oculoplastic surgeon if needed.

# How Does It Work?

I typically use a cannula (an entry hole is made using a regular needle. After that, a blunt-tipped cannula is inserted which is what lays the product) while providing volume to the chin. Often, support to the marionette lines is needed to turn up the corner of the mouth and provide more support around the chin. This is more safely achieved with an advanced cannula technique. Occasionally, I will also need to use a needle in one or two spots.

## Chin Filler for Women

Many women worry that their chin isn't as prominent as it could be or they don't like the shape. Often, a sunken chin can make jowls or a double chin look more obvious, so an increased height at the central point will sharpen the face and make it look slimmer, as well as more defined and feminine.

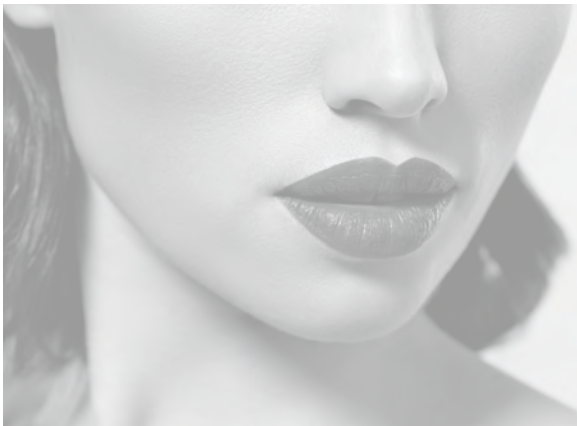
## Chin Filler for Men

For men, their jawline is often something they want to improve, especially if their chin and jaw isn't as strong or prominent as they'd like. In a man, a prominent chin with a balanced height and width will give them a strong masculine look, even more so when combined with treatment on pre-jowl and the jawline.

# Contraindications

- 1 Pregnancy and breastfeeding
- 2 The presence of an active skin condition in the treatment area
- 3 Known allergy or insensitivity to any ingredient found in dermal fillers including lidocaine

*\*\*Please see consent form for full contraindications and risk information.*



# FAQ's

---

## Which dermal filler lasts the longest?

The longevity of the dermal fillers depends on factors such as:

- Density of the filler
- Injection area
- Patient's metabolism and activity level

## Will I look natural?

When fillers are used in the appropriate amount and placed in the right location, the result is a beautiful, natural, youthful outcome. Fillers are not meant to create totally different features. In the hands of an experienced provider that has extensive knowledge of facial anatomy, the outcome simply enhances one's own facial features.

## Which filler do I need?

I use Restylane Defyne for the chin as it was recently approved by the FDA for use in the chin. This product looks natural with dynamic movement.

## How many syringes of filler will I need?

The amount of filler you will need depends on your ultimate goal. One syringe is equal to the volume of a blueberry. We can start small if you decide and use as little as a half of a syringe on each side. I find that typically my clients come back for more and ultimately have 1 to 2 syringes by the time they are satisfied.

