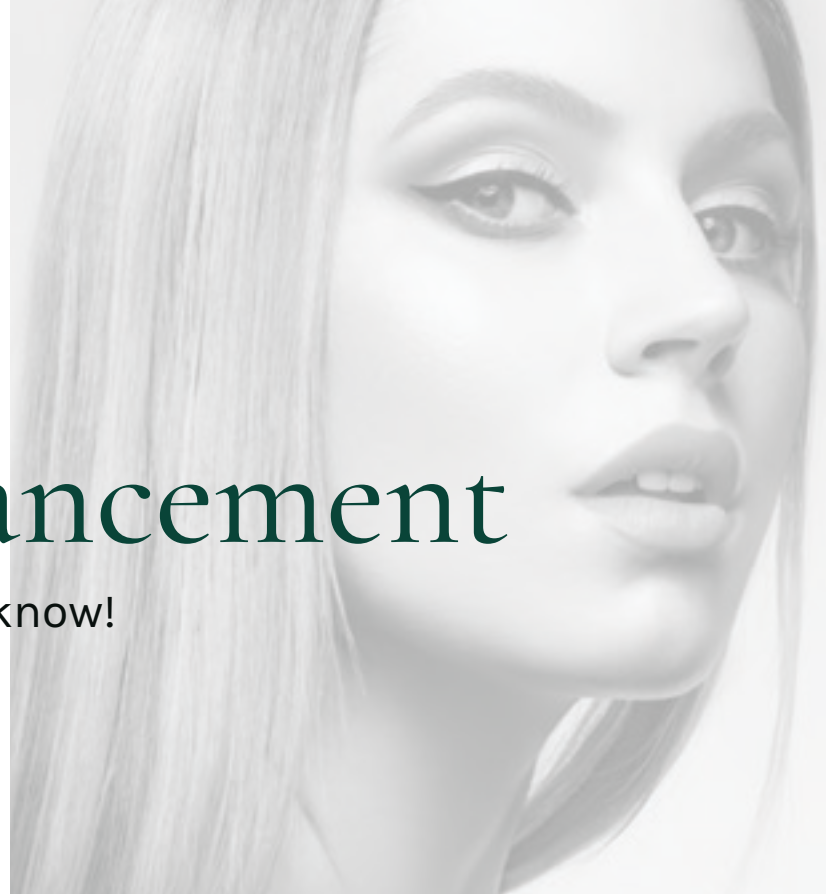




CATHERINE M  
AESTHETICS



# Jawline Enhancement

The extra stuff you may want to know!

---

## Downtime

You may return to your normal activities provided you follow the aftercare instructions. You may feel soreness in the area of injection up to five days after. Bruising and swelling can last 3 - 7 days. Give the product two weeks to fully integrate into your own tissues.

## Risks & Adverse Effects

Risks and adverse effects associated with injectable fillers are minimal in general. The common immediate adverse effects are bruising, redness, swelling, asymmetry, and itching in the injected area which will subside in a few days. Much less commonly there may be eruptions, skin sores, or infection at the injection site. On rare occasions, hard persistent bumps or nodules may form requiring dissolving with Hylenex injections or possible surgical removal. Dermal fillers also have the potential to migrate and spread to an area other than the one they were injected into.

With any dermal filler, if filler is placed into a vein or artery an occlusion can occur slowing or stopping blood flow to the surrounding tissues. It is important to seek out a practitioner that is well trained to recognize this adverse event and also have the equipment and resources to intervene immediately. At Catherine M Aesthetics, I have the medication needed on hand to help reverse an occlusion, while also having access to a Doctor of Emergency Medicine and an oculoplastic surgeon if needed.

# How Does It Work?

The application of jawline fillers is administered through a series of small injections in multiple sites along the mandible, or by using a cannula to lay the product along the jawline. This is typically not painful, although some people may experience mild levels of discomfort as you would with any injection or a prick to the skin.

Using dermal fillers to shape, define, and enhance the lower facial contours also has the added benefit of decreasing the appearance of loose skin and the appearance of a double chin (especially when combined with a chin sculpting procedure).

In men, this chiseling effect can be more dramatic. For women, depending on their desired facial shape, jawline fillers can achieve an angle that can range from soft to dramatic. Individual results vary, but hyaluronic acid filler may last up to 18 months.

# Contraindications

- 1 Pregnancy and breastfeeding
- 2 The presence of an active skin condition in the treatment area
- 3 Known allergy or insensitivity to any ingredient found in dermal fillers including lidocaine

*\*\*Please see consent form for full contraindications and risk information.*



# FAQ's

---

## Which dermal filler lasts the longest?

The longevity of the dermal fillers depends on factors such as:

- Density of the filler
- Injection area
- Patient's metabolism and activity level

## Will I look natural?

When fillers are used in the appropriate amount and placed in the right location, the result is a beautiful, natural, youthful outcome. Fillers are not meant to create totally different features. In the hands of an experienced provider that has extensive knowledge of facial anatomy, the outcome simply enhances one's own facial features.

## Which filler do I need?

The choice of filler depends on the individual patient, their treatment goals, and personal facial anatomy. I carry Juvéderm and Restylane products in my office.

## How many syringes of filler will I need?

The amount of filler you will need to sculpt your jawline depends on your ultimate goal. One syringe is equal to the volume of a blueberry. I typically recommend 3 to 4 syringes to start out with. After this settles, we can reassess and add more if desired.

