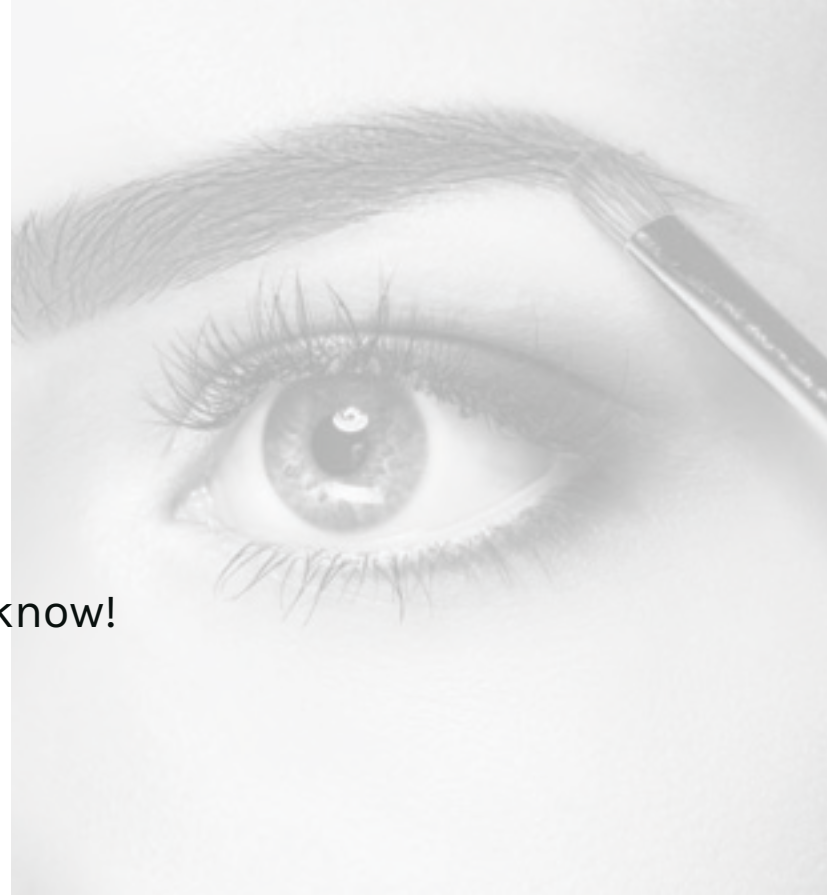




CATHERINE M  
AESTHETICS



# Tear Trough

The extra stuff you may want to know!

## Downtime

You may return to your normal activities provided you follow the aftercare instructions. You may feel soreness in the area of injection up to five days after. Bruising and swelling can last 1 - 7 days. Give the product two weeks to fully integrate into your own tissues. Though individual results can vary, most patients enjoy the results for 6 to 18 months. Factors that can influence how long your tear trough filler treatment lasts include:

- Age
- Lifestyle
- Skin type
- Muscle activity

## Risks & Adverse Effects

Risks and adverse effects associated with injectable fillers are minimal in general. The common immediate adverse effects are bruising, redness, swelling, asymmetry and itching in the injected area which will subside in a few days. Much less commonly there may be eruptions, skin sores or infection at the injection site. On rare occasions, hard persistent bumps or nodules may form requiring dissolving with Hylenex injections or possible surgical removal. Dermal fillers also have the potential to migrate and spread to an area other than the one they were injected into.

With any dermal filler, if filler is placed into a vein or artery an occlusion can occur slowing or stopping blood flow to the surrounding tissues. It is important to seek out a practitioner that is well trained to recognize this adverse event and also have the equipment and resources to intervene immediately. At Catherine M Aesthetics, I have the medication needed on hand to help reverse an occlusion, while also having access to a Doctor of Emergency Medicine and an oculoplastic surgeon if needed.

# How Does It Work?

After cleansing your skin, I use an AccuVein device to identify any major vessels on your face. I can then identify an entry landmark that will reduce the chance of bruising and increase safety. A hole is made in the skin with a regular needle. I then take a blunt tipped cannula to insert in the hole and move towards your under eye where I carefully and slowly lay down a soft dermal filler. This is a procedure in which less is more. Starting very slow and then allowing the swelling to subside over the next several weeks before we follow up in the office and repeat if necessary.

# Contraindications

Excess loose skin or large fluid filled bags under the eyes are not a good candidate for dermal filler. In this case I will refer you to an oculoplastic surgeon for a lower lid blepharoplasty.

- 1 Pregnancy and breastfeeding
- 2 The presence of an active skin condition in the treatment area
- 3 Known allergy or insensitivity to any ingredient found in dermal fillers including lidocaine

*\*\*Please see consent form for full contraindications and risk information.*



# FAQ's

---

## **At what age should you get under-eye fillers?**

Tear trough fillers are an increasingly popular non-surgical aesthetic treatment amongst younger people. However, individuals of any age can undergo the procedure if they seek a fresher, more rejuvenated look, and a break from tired looking eyes by restoring volume loss.

## **Does it hurt?**

The eyes are a very sensitive area to treat. However, many modern dermal fillers contain anaesthetic to help ease any discomfort. We can also use a numbing cream to further aid this procedure should you be particularly sensitive. Most patients find this treatment to be comfortable and without pain, likened much like a pin prick to the skin.

## **Which dermal filler lasts the longest?**

Longevity of the dermal fillers depends on factors such as:

- Density of the filler
- Injection area
- Patient's metabolism

## **Will I look natural?**

When fillers are used in the appropriate amount and placed in the right location, the result is a beautiful, natural, youthful outcome. Fillers are not meant to create totally different features. In the hands of an experienced provider that has extensive knowledge of facial anatomy, the outcome simply enhances one's own facial features.

